



Encl. 9-23
PENOBSCOT L-30



PLAY FAIRWAY ANALYSIS
OFFSHORE NOVA SCOTIA - CANADA
June 2011

Datum elevation: 29.9 m AMSL
X-coordinate: 734338.9
Y-coordinate: 4893837.9
TD (ft MD): 4267.0
Drilled in: 1976 (PetroCanada)

Scale 1:4000
UWI: L-30 Well: PENOBSCOT L-30

Seismic Interpretation
based on reflectivity
(no reflectivity log
available for this well)

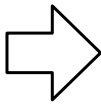
Petrophysical
Evaluation

Samples

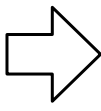
Sedimentological Data
(no data available for this well)

Stratigraphic Breakdown

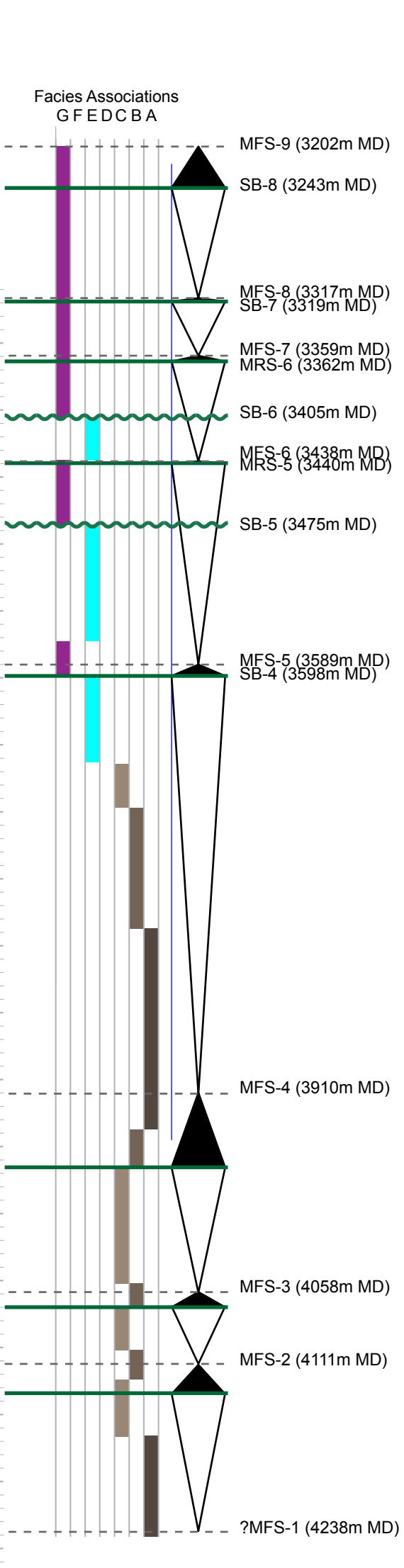
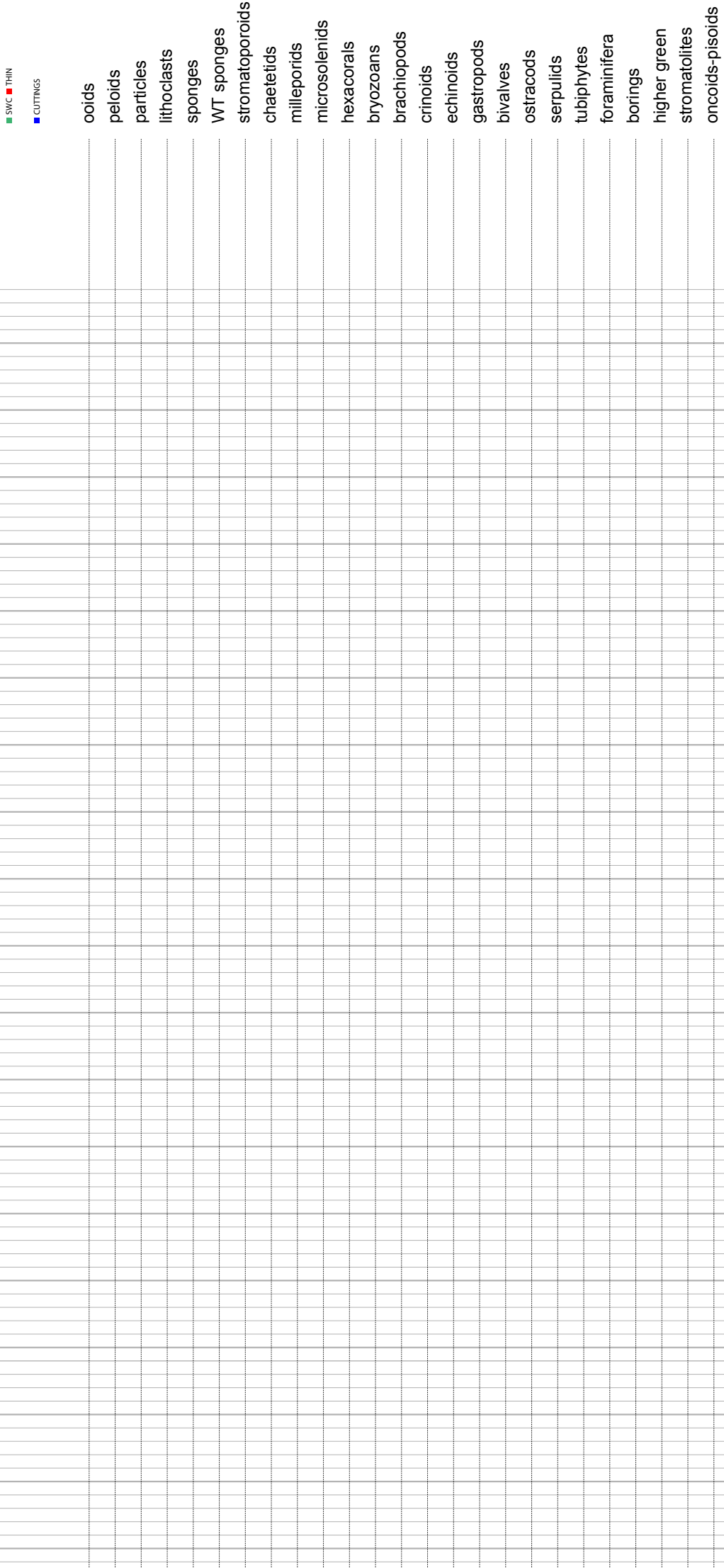
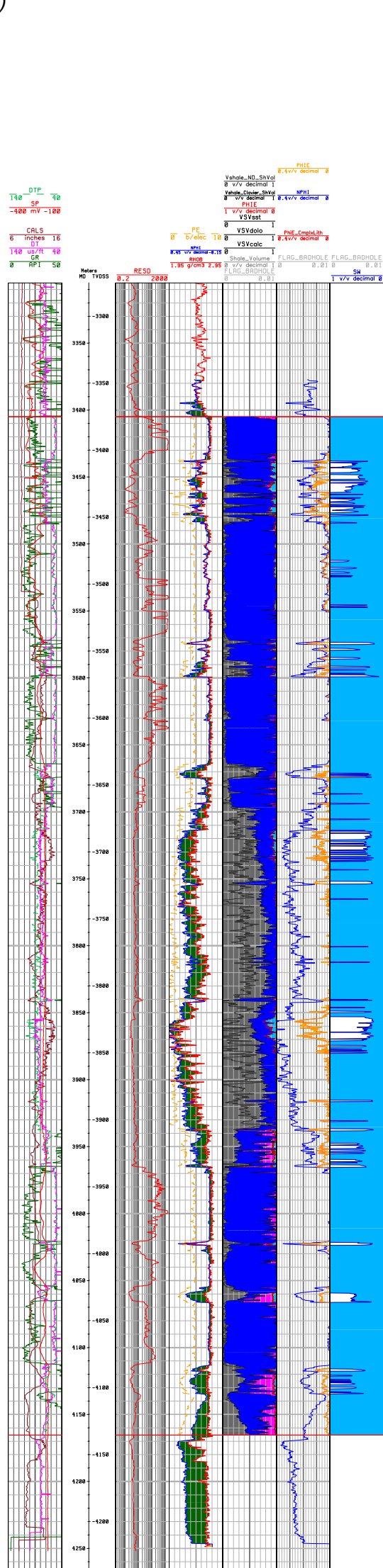
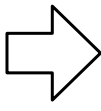
Seismic
horizon
J150



Seismic
horizon
Bac-4



Seismic
horizon
Bac-3



PETROPHYSICAL EVALUATION	
	Sandstone
	Claystone
	Limestone
	Dolomite
	Porosity

FACIES ASSOCIATIONS			
	G1 - Shallow-water siliciclastics (delta to prodelta)		C1 - "Turbid" shallow-water sponge reef mounds
	G2 - Muddy (lagoon) platform interior		C - Proximal foreslope
	F- Mixed carbonate-siliciclastic platform interior		B - Distal foreslope
	E- High-energy oolitic sand shoals		A - Deep marine shelf
	D - "Clear" shallow-water corallgal reef margin		

SEQUENCE STRATIGRAPHIC BREAKDOWN	
MFS	Maximum Flooding Surface
SB	Sequence Boundary
MFS	Maximum Flooding Surface